



March Issue

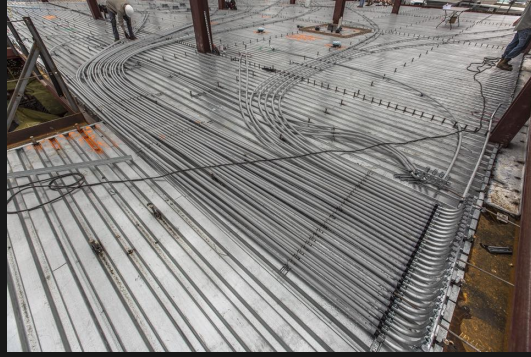
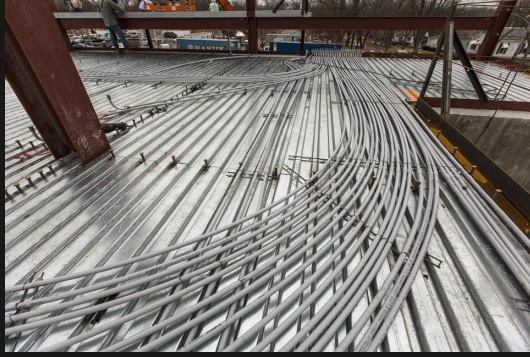
# Decker Electric

---

Progress

## Miami County Detention Center





Slab rough-in on the 1st floor deck of the new Miami County Detention Center.  
Foreman: Brian Geist



Decker Electric is sponsoring the Midian Shrine Circus at Intrust Bank Arena. You can see one of their seven shows April 22nd through April 24th. General admission tickets are \$15/adults and \$5/kids. You can follow this [link](#) to purchase tickets.

## Recently-Awarded Projects in the First Quarter

EKAE Flywheel UPS *Garnett, KS*  
PHAF Generator and Flywheel UPS  
*Phillipsburg, KS*  
Grain Storage Project *Lyons*  
GP *Atkinson, NE*  
UP Compressor *Cheyenne, Butler*  
*and North Platte*  
Foley Equipment-1550 Project  
Convergys Phase II-B *Dallas*  
EKAE Heat Trace Phase I  
*Garnett, KS*  
Site Lighting *Lexington, NE*  
Convergys Phase III *Dallas*  
CNH 35 LED light install  
Tyson Holcomb Process Fans

## Projects Bidding

CO2 Plant *Lyons*  
Wesley Derby FSED - *Electrical*  
Wesley Derby FSED - *Telecom*  
Meter Engineers *New Building*  
Standard Beverage Office Remodel  
*Wichita, KS*  
Convergys - *Dallas Level 3 -*  
*92 Drop*  
Mid Continent Cab - *Plant 1 Finish*  
*Area LED*  
Convergys - *Laredo Phase II*  
City of Goddard-*IP Camera System*  
Custom Cupboards- *Grounding*  
MKC Milan Grain Storage  
Grain Handling Facility *Guymon, OK*  
WSU Koch Arena *LED Upgrade*  
St. Joes Assisted Living  
The Anderson's Rail Car Repair  
Facility  
BNSF Natural Gas Boilers  
*Alliance, NE*  
USD 261 Fiber Optics  
Convergys *North America*  
CHS *Hutchinson, KS*

## Current Projects

Ninnescah Rural Electric  
*Cooperative Office & Warehouse*  
Pratt Regional Medical Center  
*Phase 5*  
WB Garnett – *Garnett, KS*  
*Renewables*  
WB Phillipsburg – *Phillipsburg, KS*  
*Renewables*  
Wesley Medical Center  
*Peds Renovation Low Voltage*  
Miami County Detention Center  
*Paola, KS New Detention Center*  
Garnett Grain Storage Upgrades  
WB Phillipsburg *Lab and Storage*  
Convergys -*Dallas, TX Phase II*  
*Electrical and Low Voltage*  
ICM SMT Project-*Fairmont, MN*  
Show Me Ethanol *Hammermill &*  
*Fermenter Addition*  
Eureka Riverside Park *Field Lighting*  
Landoll *Arc Flash*  
Foley-PC *Primary Electrical*  
*Relocation-Dyno Cooler Building*  
Tyson - *Amarillo, TX Compressor*  
*Pumps, VFD Controls and PLC*  
*Replacement*  
Corenjo *Dredge*  
RedGuard Systems *Data, Access*  
*Control Phase II*

## Monthly Projects

Foley Equipment  
Beechcraft, *Wichita KS – Electrical*  
*T&M*  
Service Department Work – *City of*  
*Wichita*  
UPRR Electrical Upgrades  
throughout the US – *T&M Work,*  
*Master Agreement*  
UPRR Fuel Management Upgrades  
throughout the US – *T&M Work,*  
*Master Agreement*  
GEVO

Progress  
**Pratt Regional Medical Center**



Phase 5 at Pratt Regional Medical Center. Structural Steel and Pre-cast Concrete are being completed for the ED Entrance. To the right is the Oxygen Tank Farm in progress. Foreman: Chris Brewer

**Our mailing address is:**  
4500 West Harry  
Wichita, KS 67209  
316-265-8182  
[www.decker-electric.com](http://www.decker-electric.com)